



Government of Malta

Maltese Language Keyboard Driver

Version 2.0

User Guide

Maltese Language Keyboard Driver

Version 2.0

User Guide

Government of Malta

January 2009

Maltese Language Keyboard Driver

Contents

Introduction.....	1
Software Compatibility.....	1
Important Information before Installation.....	1
Installing the Keyboard Driver	2
Running and Activating the Keyboard Driver	8
The Maltese Keyboard Layout	9
Standard 48-Key Layout	9
47-Key Layout	9
Note for Windows 2000 and Windows XP Users.....	10
Advanced Functions.....	11
Configuration	11
Visual Keyboard	11
Known Issues	12
Support.....	12
User Licence Agreement.....	13

Introduction

The Maltese Language Keyboard Driver you are about to install compliments the Maltese Keyboard Layout as defined by the Malta Standards Authority (www.msa.org.mt) MSA 100:2002 Standard.

The Maltese Keyboard Driver incorporates within it Tavultesoft Keyman 6.0 application software, which collectively are being provided to you free of charge on the Malta Information Technology Agency website (www.mita.gov.mt) subject to the User Licence Agreement listed at the end of this User Guide.

Software Compatibility

The following table indicates the Office Automation applications the Maltese keyboard driver is compatible with:

Application	Version	Win 98SE	Win 2000 *	Win XP *
MS Word	97 / 2000 / XP	✓	✓	✓
MS Excel	97 / 2000 / XP	✗	✓	✓
MS PowerPoint	97 / 2000 / XP	✗	✓	✓

* *In practice the Maltese Keyboard Driver works on ALL fully Unicode Compliant applications such as StarOffice or MS Internet Explorer running on Windows 2000 or Windows XP.*

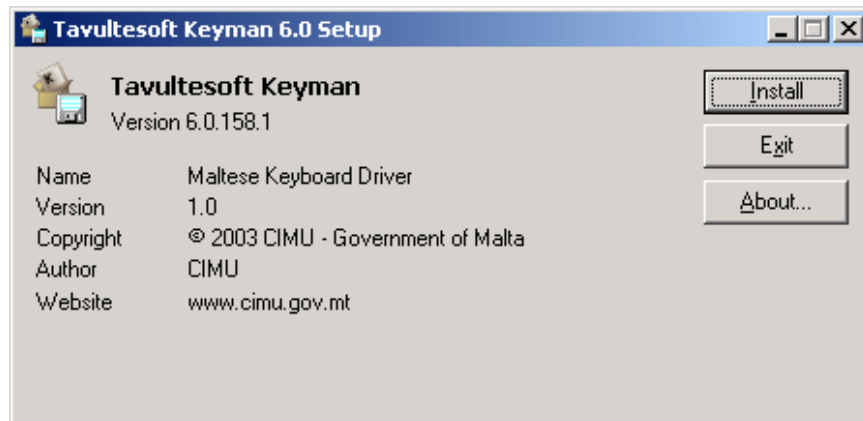
Important Information before Installation

Before installing the Maltese Keyboard Driver you need to **uninstall ANY previous BETA versions** of the Keyboard Driver (Keyman BETA 0.1) and reboot your system.

There is **NO NEED** to uninstall the Maltese Language Support (MLS) Software.

Installing the Keyboard Driver

1. To start installing the software, double click on the Installation File and click on the **Install** button on the Setup Screen.



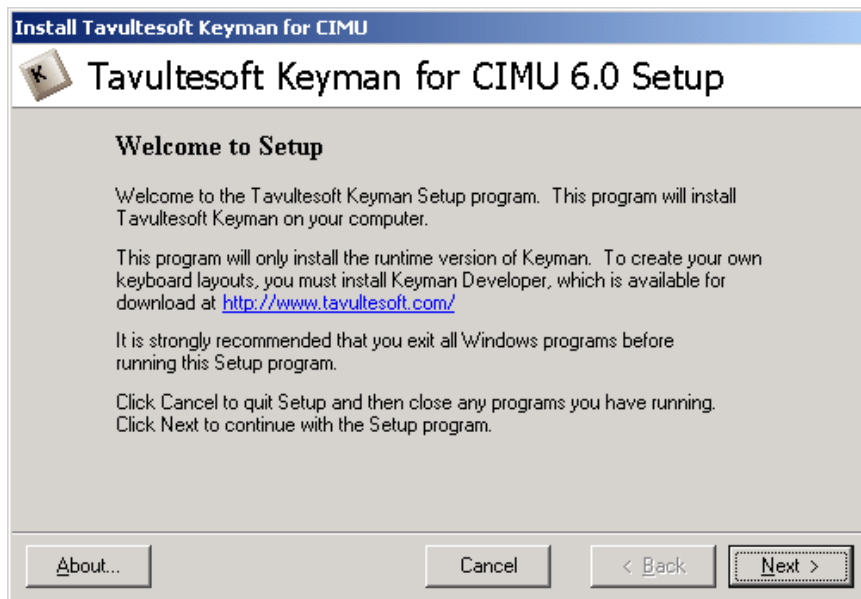
The **About** button will display the Registration Details of the Maltese Keyboard Driver.



You may Cancel the Installation anytime by clicking on the **Exit** button or **Cancel** button and then confirm your choice accordingly.

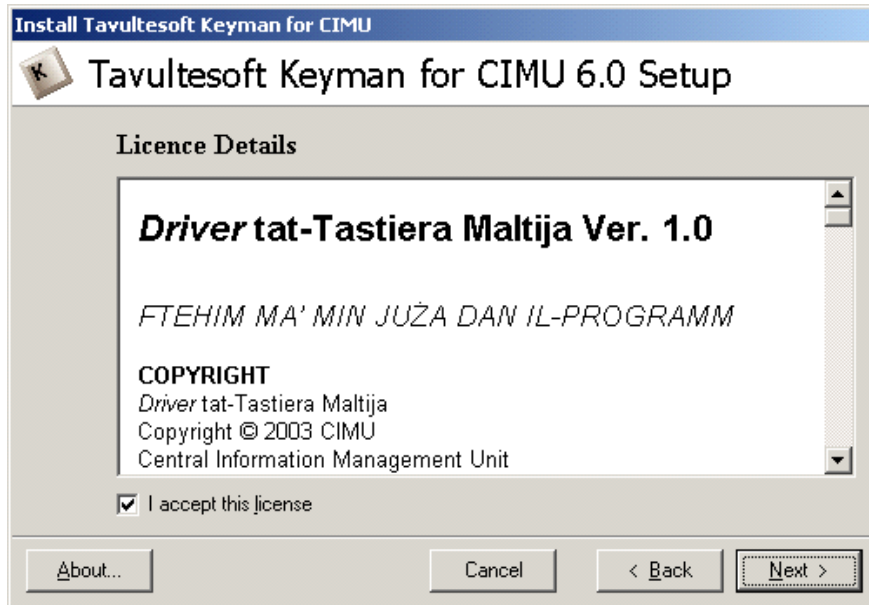
2. Read carefully and follow the instructions on the Welcome to Setup Screen.

Click **Next** to proceed with the installation.

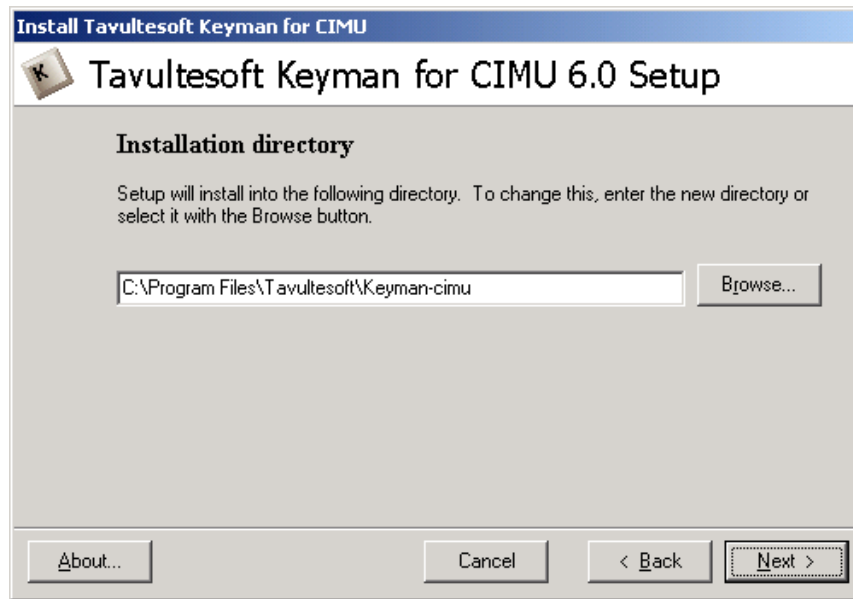


3. The Licence details are available in both the Maltese and the English language. Scroll through the whole text and read carefully the Licence Details.

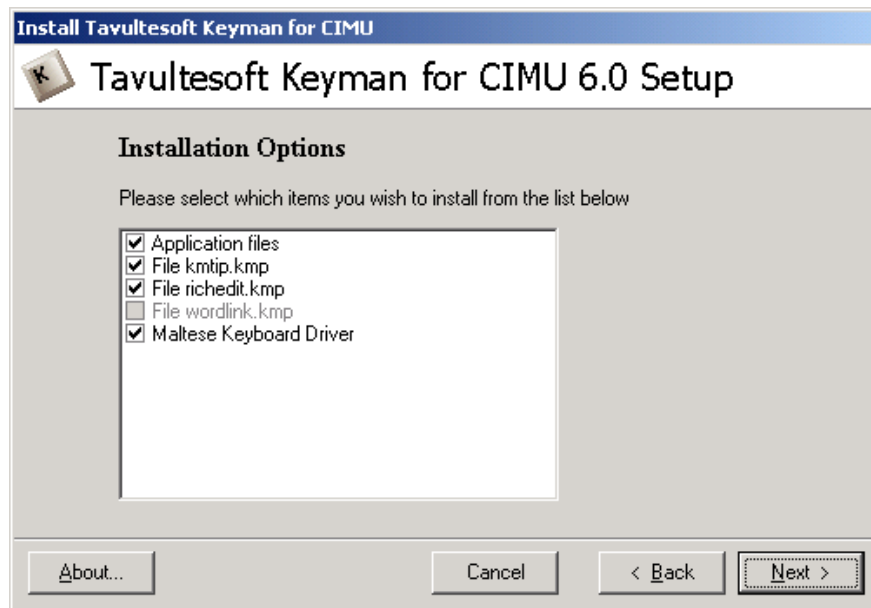
Click the **I accept this license** tick box and then click **Next** to move to the Installation directory Screen.



4. Click **Next** to accept the recommended default directory or click **Browse** to change the installation directory if necessary.

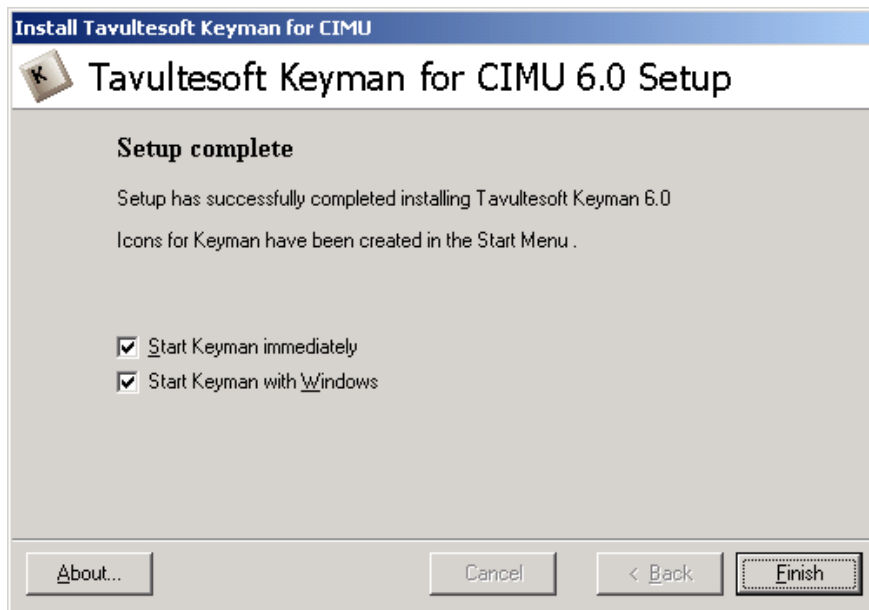


5. In the Installation Options Screen click **Next** to finalise the installation accept all the recommended files already ticked or click the application files you want to install.



Note: The screenshot above is just indicative. Some items may not be applicable and therefore be grayed out.

6. The Setup Completion Screen is displayed.
Click **Finish** to complete installation to accept the recommended options already ticked or deselect any option as necessary.



It is recommended to REBOOT the system after the installation is completed.

Running and Activating the Keyboard Driver

If you select the option to *Start Keyman with Windows* the Maltese Keyboard Driver will launch automatically when you start Windows.

However you may run the program as follows:

1. Start-> Programs-> Tavultesoft Keyman for CIMU-> Keyman
2. The Keyman icon will be displayed in the system tray.

To activate the Maltese Language Keyboard Driver, left click on the keyboard driver icon in the Taskbar's System Tray and select **Maltese**.



As shown below, the icon changes to a blue icon with the letters 'MT' denoting that the the Maltese Keyboard Driver is **ON**. You should activate the keyboard driver **with every application you run**. The blue icon will indicate that the Keyboard Driver is activated, allowing you to type the Maltese characters.



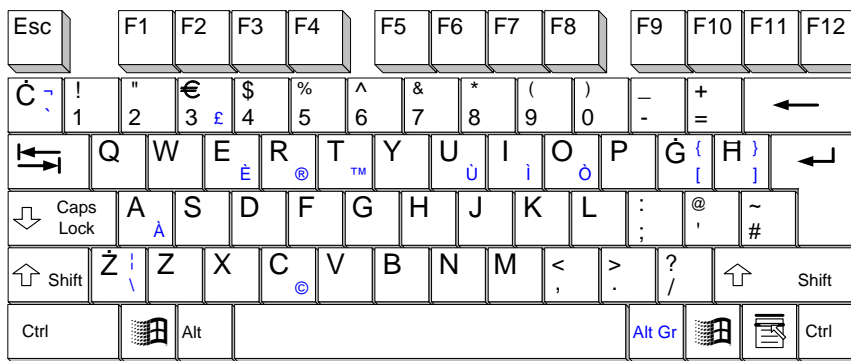
Alternatively you can press **Ctrl + F12** to activate and deactivate the Maltese Keyboard Driver.

The Maltese Keyboard Layout

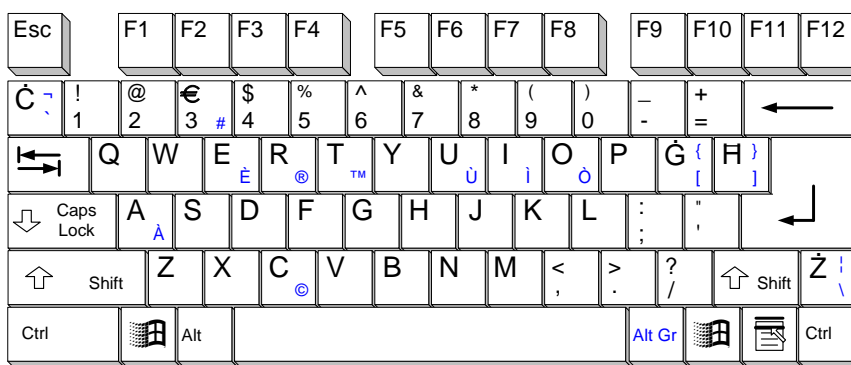
The Maltese Keyboard Layout is based on MSA 100:2002 Maltese Keyboard Standard (www.msa.org.mt) as shown below.

The blue characters indicate the alternative characters that can be typed when the key pressed is combined with Alt Gr.

Standard 48-Key Layout



47-Key Layout



Note for Windows 2000 and Windows XP Users

When using Windows 2000 or Windows XP, the Alt Gr Key can be combined with other keys to have the following output :

AltGr + A = à	AltGr + Shift + A = À
AltGr + E = è	AltGr + Shift + E = È
AltGr + I = ì	AltGr + Shift + I = Ì
AltGr + O = ò	AltGr + Shift + O = Ò
AltGr + U = ù	AltGr + Shift + U = Ù
AltGr + T = ™	
AltGr + C = ©	
AltGr + C = ®	
AltGr + ` = `	AltGr + Shift + ` = ¬
AltGr + [= [AltGr + Shift + [= {
AltGr +] =]	AltGr + Shift +] = }
AltGr + 3 = £	

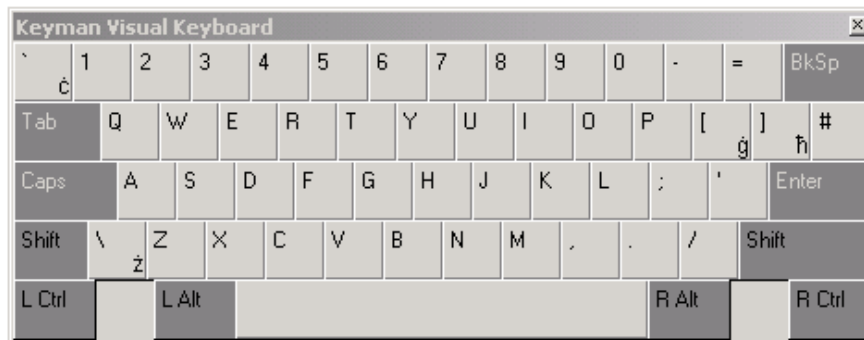
Advanced Functions

Configuration

The Maltese Keyboard Driver can be customised by right clicking on the Maltese Keyboard Driver icon and selecting **Keyman Configuration**. This setup is **ONLY** recommended for advanced users. It is recommended to refer to the Keyman Help File for further information about this feature.

Visual Keyboard

The Maltese Keyboard Driver package comes also with a visual keyboard. This can be activated by right clicking of the Maltese Keyboard Driver icon and selecting **Visual Keyboard**. This feature enables the user to click on an onscreen keyboard to be able to input characters. This is particularly useful for persons with special needs.



You are required to use Ctrl+Alt to replace the Alt Gr function.

Known Issues

The following is a list of known issues. It is anticipated that most of these issues will be solved over time.

Item	Issue	Work Around Solution
01	With the Maltese Keyboard Driver switched on, the key combinations ALT+[num pad], to enable the insertion of characters which are not on the keyboard by entering their ASCII code, do not work.	Deactivate the Maltese Keyboard Driver, to be able to type in the characters, and activate it again to continue to type in Maltese.

Support

This is the initial release of the Maltese Keyboard Driver. Should one have any queries, suggestions or difficulties, one is kindly requested to send an e-mail maltese.support@gov.mt with **Maltese Language Keyboard Driver Feedback** as subject.

User Licence Agreement

COPYRIGHT

Maltese Keyboard driver
Copyright © 2009 MITA
Malta Information Technology Agency
on behalf of the
Government of Malta
www.mita.gov.mt

Portions of this product are copyright
Copyright (C) 2002 Tavultesoft.
Tavultesoft
PO Box 550
Sandy Bay TAS 7006
AUSTRALIA
Australian Business Number: 15 155 414 619
www.tavultesoft.com

DISCLAIMER OF WARRANTY

This software and the accompanying files are provided "as is" and without warranties as to performance or merchantability or any other warranties whether expressed or implied.

The Malta Information Technology Agency and Tavultesoft make no representations or warranties about the suitability of the software, either expressed or implied, including but not limited to the implied warranties of merchantability, fitness for a particular purpose, or noninfringement.

The Malta Information Technology Agency and Tavultesoft shall not be liable for any damages suffered by licensee as a result of using, modifying or distributing this software/data or its derivatives.

The Malta Information Technology Agency and Tavultesoft shall not be held responsible for any corruption or loss of data.

The Malta Information Technology Agency and Tavultesoft shall also not be held responsible for any (both hardware and software) downtime.

SOFTWARE COVERED UNDER THIS AGREEMENT

Tavultesoft Keyman 6.0 refers to the Keyman application, Keyman configuration application and help files included in the setup archive.

The Maltese Keyboard Driver includes Tavultesoft Keyman 6.0, and a Maltese language keyboard together in an installable package.

DISTRIBUTION

You are permitted and encouraged to distribute the original Keyman Maltese Language Keyboard Driver setup archive, WITHOUT ANY MODIFICATIONS WHATSOEVER. You may not modify any of the Keyman Maltese Language Keyboard Driver programs in any way.